

Document & Workflow Automation

Improve efficiency through end-to-end content and process automation

FileBound by Upland Software delivers business process automation and document management applications that improve the operation of any organization by connecting users with the information they need to work more efficiently and effectively.

With FileBound, customers can build automated workflow processes and centrally manage documents to improve compliance, collaboration and access to information. FileBound applications can be deployed locally or as a cloud-based service and have been implemented by organizations of all sizes around the world.

Benefits

Unlike legacy products, FileBound's simplified, flexible approach to usability, configurability and licensing delivers fast, game-changing results:

- **Easy-to-use configuration tools** give you greater control and agility by reducing reliance on IT when responding to changing business needs
- **Device-agnostic mobile solutions** seamlessly support BYOD policies and remote users at no additional cost
- **Analytics tools** provide meaningful, timely and actionable insights into all workflow processes to harness the full value of the data to make better business decisions
- **Contemporary interface design** makes it easy to adapt to automation technology and controls what you see when logging on, making it easier to complete work
- **Easy-to-understand, all-in-one licensing options** meet the needs of businesses of all kinds
- **Strong integration capabilities** allow you to build end-to-end automation solutions that maximize productivity by eliminating "data silos"

"The product is clean and intuitive. After we bought FileBound, three of us went in for training and left less than an hour later — it was so simple."

— Keith Dey, IT Manager
Nebraska DMV

The Upland Product Family

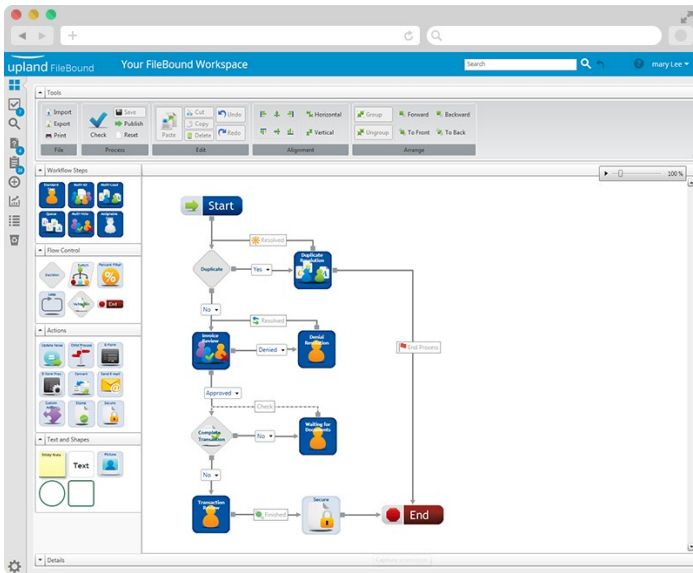


Automating the flow of work, connecting people through technology and bringing visibility to all aspects of the organization.

Our family of products helps teams run their operations smoothly, adapt to change quickly and achieve more every day. Each product is built with a specific need in mind. See what you can do with Upland.

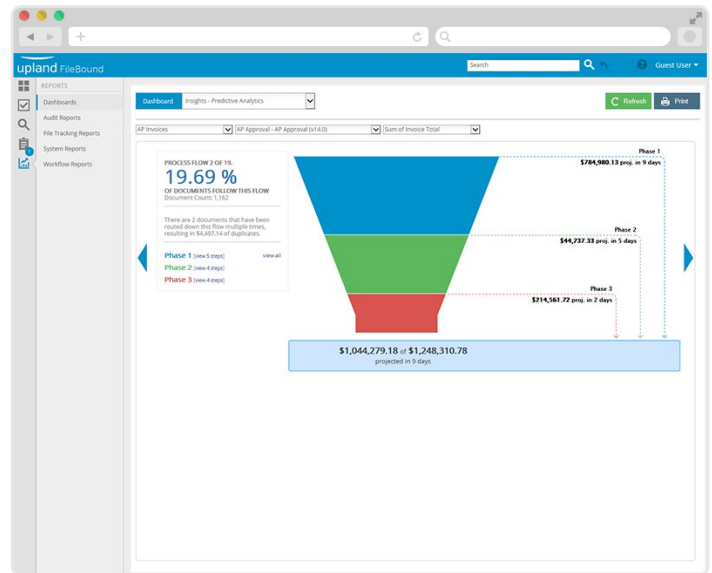
Workflow Automation

Automated workflow functionality allows your organization to reengineer and streamline work processes.



Decision-Making Intelligence

Turn workflow data into decision-making intelligence with analytics that deliver meaningful, timely, actionable business insights into all work processes.



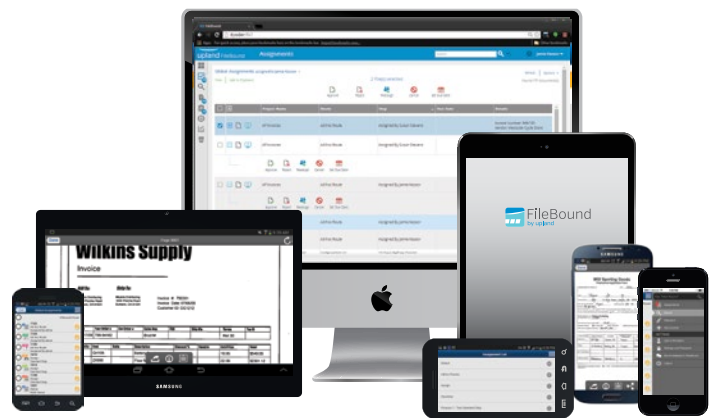
Drag & Drop Electronic Form Creation

In just minutes, create forms with drag and drop ease to collect data from anyone, anywhere.

The screenshot shows the Upland FileBound Form Creation interface. It features a 'Toolbox' on the left with various form elements like 'Static Text', 'Input Fields', 'Buttons and Actions', and 'Layout'. The main canvas displays a form titled 'Application for Employment' with fields for 'Contact' (First Name, Last Name, Address, City, State, Zip code, E-Mail, Phone #, Date) and 'Education' (High School, College, Major, Year Graduate). The interface includes a 'Save' button and 'HTML View' and 'Design View' options.

Mobile Support

Support BYOD with a superior user experience, however and wherever you want to access FileBound, including apps for Android and iOS.



About Upland Software

Upland is a leading provider of cloud-based enterprise work management software. With more than 1,200 enterprise customers around the globe, and over 200,000 users, Upland helps teams in IT, marketing, finance, professional services and process excellence run their operations smoothly, adapt to change quickly and achieve better results every day. Contact us at info@bi-jc.com or [+1-\(800\) 555-1234](tel:+1-800-555-1234).